



Delaware Child Development
Child Care Resource & Referral

Annual Report 2008 - 2009



Mission Statement:

To improve and maintain the quality and affordability of child care in Central Oklahoma through collaboration with community and state organizations, as well as by assisting child care providers in locating adequate resources and referring parents to child care programs that meet their specific needs.

1-866-254-9864
www.delawarechild.org



Delaware Child Development Resource & Referral is proud to be a Child Care Aware® Quality Assured Program, a national certification that ensures that families and child care providers are receiving the highest quality of services.

Our Offices



Delaware Child Development
Child Care Resource & Referral

**Three offices are available in the service delivery area
for your convenience:**



Bartlesville

Our main office is located at 5110
Tuxedo Boulevard in Bartlesville.



**Satellite offices are located in
Ponca City and Stillwater**

Our Ponca City office
is located at 121 East
Grand, across from
Home National Bank.

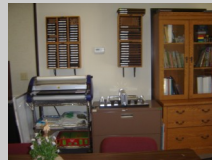


Ponca City



Stillwater

Our Stillwater office is located off of
7th Street & Western in the Wicklow
Plaza at 2324 W. 7th Place, Suite 4.





Delaware Child Development
Child Care Resource & Referral

Supportive Services

Delaware Child Development Child Care Resource & Referral services include:

◆ RESOURCES FOR FAMILIES

- ◆ Assistance in locating child care
- ◆ Information about quality care for children
- ◆ Child care checklists to assist in selecting child care
- ◆ Help determining eligibility for subsidized care
- ◆ Child Development information for parents
- ◆ Access to the Lending Library

◆ RESOURCES FOR PROVIDERS

- ◆ Referrals for families in need of child care
- ◆ Training programs and workshops
- ◆ Food and nutrition programs
- ◆ Lending Library (books, videos, resource activity kits, book bags, curriculum materials, professional development resources, lamination, die cutting)
- ◆ Information on state licensing and regulations
- ◆ Child care business start-up assistance
- ◆ Professional development planning
- ◆ Technical assistance per phone, email, office and provider site

◆ RESOURCES FOR EMPLOYERS & COMMUNITIES

- ◆ Cost-effective ways to address child care needs of employees
- ◆ On-site seminars for employees on balancing work and family
- ◆ Information to employees on child development and finding quality child care
- ◆ Ideas for family friendly policies for employees
- ◆ On-site child care referrals for employers
- ◆ Information on supply and demand of local child care
- ◆ Community child care facts
- ◆ Child care advocacy at local and state level



Delaware Child Development Resource & Referral is a Child Care Resource and Referral Network for nine counties in North Central Oklahoma including Kay, Lincoln, Logan, Noble, Nowata, Osage, Payne, Pawnee and Washington counties.

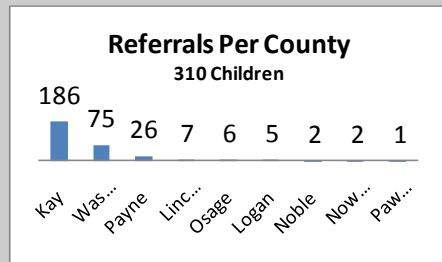
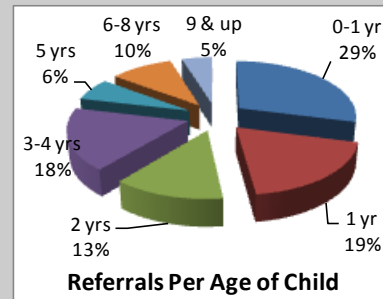
Services to Families



Delaware Child Development
Child Care Resource & Referral

Resource and Referral is funded in part through a block grant from the Department of Health and Human Services, the Oklahoma Child Care Resource and Referral Association (OCCRRA), Washington County Child Care Foundation, and the Oklahoma Department of Human Services, Division of Child Care.

Between July 1, 2008 and June 30, 2009, Delaware Child Development Resource & Referral Agency received 238 calls from parents and grandparents searching for child care for 310 children in the service delivery area. In addition, there were 76 persons who searched over the internet for child care using North Central Child Care Connector.



60% of children referred for child care were for Kay County. Washington County came in with the next highest referral rate of 24% of children. 8% of children referred were for Payne County. The remaining 8% of child referrals were for the six rural counties.

Nineteen callers received referrals to other agencies for resources during the 2009 fiscal year. These included needs for tribal subsidy, DHS subsidy, respite care, parenting education, home visitation, nanny care assistance, food assistance, utility assistance, pregnancy testing, developmental information (Sooner Start), and 211. Two callers were referred to other CCR&R agencies for child care referrals in a different region. Another 2 callers were given information and contacts for DHS licensing after expressing an interest in opening a family child care home. In addition, there were 46 visits to our Resource Rooms by parents during the fiscal year.

Delaware Child Development Resource & Referral is a proud member of the Oklahoma Child Care Resource & Referral Association (OCCRRA) and of the National Association of Child Care Resource & Referral Agencies (NACCRRRA).





Delaware Child Development
Child Care Resource & Referral

Services to Care Providers

Delaware Child Development Resource & Referral Agency served 428 child care providers in our service area during fiscal year 2009. Bi-monthly newsletters, information distribution, training, technical assistance and collaboration for child care conferences were among some of the many services provided.



**Provider
Appreciation
Banquet**



A total of 70 trainings were held for child care providers in fiscal year 2009. There were 44 trainings presented by our staff, equaling 94 hours of instruction to 525 attendees. In addition, 26 trainings given by other trainers were facilitated by our staff. These totaled 106 hours of instruction to 432 attendees.

Family & Community Partnerships

Child Observation & Assessment

Health & Safety

Child Growth & Development

Professionalism & Leadership

Interactions with Children

Nutrition



Curriculum

Learning Environments

Program Planning & Development

Technical assistance was provided through more than 200 phone calls and emails during the fiscal year. In addition, there were 114 visits to family child care homes and child care centers in which our staff assisted providers through technical assistance. There were also 21 visits to our offices from providers seeking technical assistance for things such as behavior & guidance, policies & procedures, education, curriculum & program needs, establishment & expansion of services, bookkeeping, and information on other resources.

Child care providers visited our Resource Rooms in Bartlesville, Ponca City and Stillwater 270 times during the fiscal year to obtain resources for use in their facilities, such as book bags, curriculum, activity kits, die-cutting and lamination.

Staff made efforts to recruit new child care providers 28 times during the year and sent out 54 information packets on establishing child care businesses.

Services to Communities



Delaware Child Development
Child Care Resource & Referral

Educating communities and advocating for quality child care in Oklahoma is a large part of the daily work of Delaware Child Development. Our Resource & Referral staff were very active in outreach during fiscal year 2009 through distribution of written information, collaboration with community organizations, participation in community events involving families and meeting with legislators on the local, state and federal levels.



State Rep. Steve Martin reads to a child during Child Watch Tour

Resource & Referral staff distributed more than 1,300 brochures in the service delivery area outlining the services that we provide. Distribution was made to DHS office, community events, counseling centers, hospitals, health departments, chambers of commerce, legislators, churches, schools, and other locations. Information on Hispanic services available from the Oklahoma Child Care Resource & Referral Agency, as well as Spanish Child Care Conference flyers, were distributed throughout the region as well. Information and activity booths were held at 13 locations in the service area where more than 2,700 parents, providers and community members attended.

Resource & Referral advocated for early childhood education during the *Day on the Hill* at the Oklahoma State Capitol. We met with legislators, discussing child care supply & demand and other issues affecting child care in our areas. While there, we distributed NACCRRA and OCCRRA Portfolios, which contain statistical data on child care in Oklahoma and national trends. Resource & Referral participated in the NACCRRA Symposium, a national conference on child care. Sherry Rackliff, Delaware Child Development Executive Director, worked with the National Women's Law Center in Washington, DC on the "Transforming Child Care" committee to develop a vision statement for Early Childhood. Media reports on child care issues were also distributed throughout the year to local newspapers across the service area.



Mansur Choudry, Director of the Autism Behavioral Education Lab (ABEL) at Special Care in Oklahoma City, answers questions from attendees during the "Many Faces of Autism" workshop

On the local front, Resource & Referral worked in collaboration with community leaders through various committees in all of the nine counties we serve. Bartlesville collaborations helped create a child watch tour and hosted Dr. Olson Huff to talk about the economic and social impact of early intervention on communities over the lifespan. We are proud, also, to have hosted Autism workshops with Mansur Choudry in Bartlesville, Ponca City and Stillwater. Collaborative efforts with a tribal agency also saved one small community from losing two child care facilities.



Delaware Child Development
Child Care Resource & Referral

Contact Information

Main Office:

5110 Tuxedo Blvd.
Bartlesville, OK 74006
Fax: 918-337-6525
Sherry Rackliff, Executive Director
918-337-6501
Serenity Keeling, R&R Specialist
918-337-6513



Bartlesville

Satellite Offices:

121 East Grand Avenue
Ponca City, OK 74601
Fax: 918-337-6527
Debra Gibson, Regional Coordinator
918-337-6524
Janet Lewis, R&R Specialist
918-337-6520



Ponca City

2324 W. 7th Place, Suite 4
Stillwater, OK 74074
Fax: 918-337-6528
Pam Davis, R&R Specialist
918-337-6522



Stillwater

(When planning to visit one of our Satellite offices,
please call ahead as staff are often out in the community)

Toll-Free:
1-866-254-9864

Web Site:
www.delawarechild.org

Office Hours:
8:00 AM–5:00 PM
Monday–Friday

E-mail:
r&r@delawarechild.org

**Delaware Child Development
is governed under the direction of the
Washington County Child Care Foundation**



Delaware Child Development
Resource & Referral
5110 Tuxedo Blvd.
Bartlesville, OK 74006

NON PROFIT
ORGANIZATION
US POSTAGE PAID
BARTLESVILLE, OK
PERMIT #240

1-866-254-9864
www.delawarechild.org